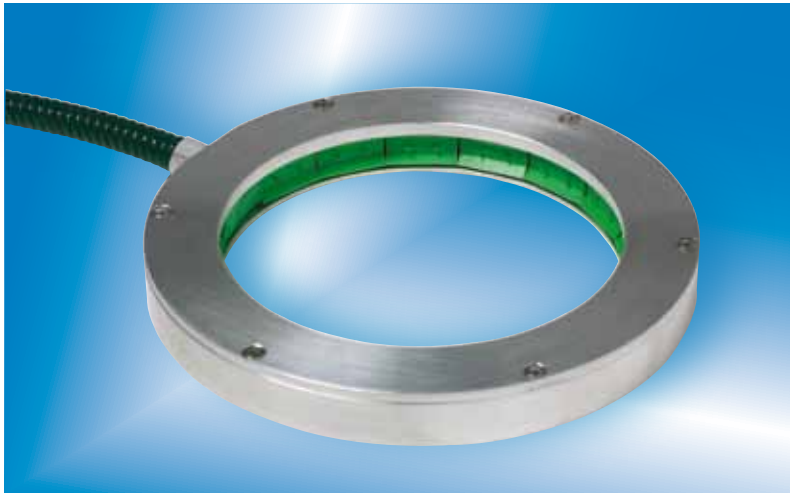


# 912

## Circular Bar



The Model 912 range of circular static eliminators is based on the popular Model 910 shockless bar. The inductively coupled design provides powerful static neutralisation and completely shockproof operation.

The Model 912 is powered by the Model 904 (refer to separate datasheet) and is suitable for applications where 360° neutralisation is required.

912/04/EN/-11/09

### Technical Characteristics

Dimensions (cross section)	30mm x 16mm (w x h)
Dimensions (internal diameter)	range from 30mm to 254mm
Weight	From 350g
Construction	Anodised aluminium
Maximum operating temperature	85°C
Mounting	Mounting holes are located in the cable entry housing
HT Cable	2m shielded in flexible conduit; longer lengths can be ordered
Emitters	Stainless steel moulded in polypropylene
Operating voltage	7.0kV
Pin energy	Approx 0.15 mJ

### Feature

### Benefit

Powerful ion production	Fast charge decay times
Shortcircuit-proof	Accidental earthing of one electrode allows the remaining electrodes to continue to operate

Product shown in this document may be covered by one or more patents, patents applied for and/or registered designs and/or trade marks. For further information please refer to our Head Office or visit [www.meech.com](http://www.meech.com).

Meech International

UK: +44 1993 706 700  
Hungary: +36 27 535 075

USA: +1 330 564 2000  
China: +86 21 6119 6725

Belgium: +32 8067 0204

email: [sales@meech.com](mailto:sales@meech.com)  
web: [www.meech.com](http://www.meech.com)

